

AURY 

**NTE
200**

Mining Truck



- » Gross Horsepower: 2000hp
- » Payload: 172-186t

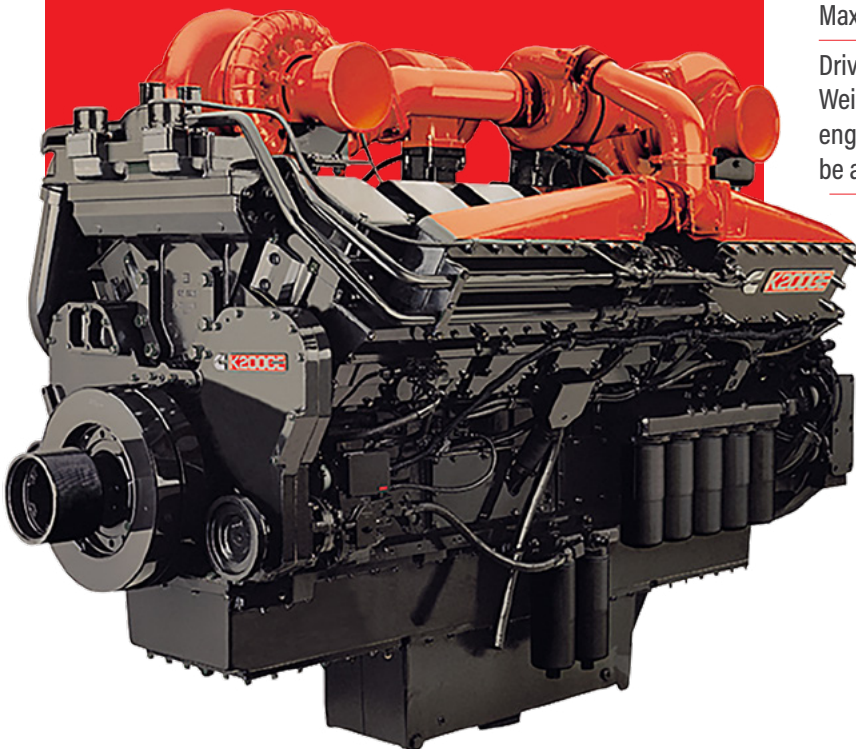
NTE 200

Mining Truck

>> ENGINE

Manufacturer	Cummins	MTU
Model	K2000E	12V4000C23R
Operating Cycle	4	4
Number of Cylinders	16	12
Rated Power (SAE)	1490kW (2000hp)	1510kW (2025hp)
Flywheel HP	1380kW (1850hp)	1400kW (1875hp)
Weight Dry	5292 kg	7000 kg

Flywheel HP is the rated horsepower at the engine flywheel minus the average accessory losses. Accessory losses include radiator fan, battery charging alternator and pumps. Rating based on standard conditions in accordance with ISO 3046 and/(or) SAE J 1995.



>> MAIN FRAME

The frame features a straight rail and tubular center cross beam design to eliminate sources of stress concentration. Main frame box section rails are designed to reduce stress and increase frame fatigue life. The tubular center cross beam structure enhances the torsional resistance. A submerged arc welding process further reduces stress with full-penetration welded joints, which increases frame fatigue life.



>> GE200AC™ DRIVE

Alternator	5GTA22W
Wheel Motor	5GEB38A
Control Group	17KG527 (IGBT)
Resistor Grid	17EM137
Gear Ratio	26.825:1
Max Speed	56.3 km/g (35mph)
Number of Resistor	9
Maximum Continuous Rating	1864kW (2500hp)

Drive system application depends on the Vehicle Gross Weight, haul road grade and length, rolling resistance, engine HP and Other parameters. Each of application must be analyzed to insure optimum truck specifications.

The electric retarding system is equipped with air-cooled grid, which can provide efficient, safe and reliable slow force for the electric retarding system.

>> SAFETY

The integrated ROPS (Rollover Protective Structure)/FOPS (Falling Objects Protective Structure) cab design and testing keeps the driver safe during hauling and loading. A traction control and anti-slip systems, assists the operator in slippery or dangerous conditions.

>> COMFORT

Variable settings of the nitrogen-over-oil cylindrical suspension struts and independent front beam axle ensure a smooth, comfortable ride. The cab features include, generous cab space, back-lit dashboard, pressurized and filtered intake air system, two full-size comfit seats with full 180 degrees of vision provides a high level of driver 's comfort that leads to higher productivity.

>> CAB

Integral FOPS/ROPS (Falling-object protective structures / Roll-over protective Structure) Cab meets requirements of ISO 3449/ISO 3471. Features include deluxe interior, tinted safety glass, curved windshield for added field of view, tilt and telescopic steering wheel, heater and defroster and pressurized and filtered intake air for driver comfort. Sound exposure is at an equivalent sound level of less than 75 dB(A) and is tested per SAE J 1166 with doors and windows closed.



>> POWER

Equipped with Cummins K2000E and MTU 12V4000C23R engine options and systems which are specifically designed for surface mining. The power package features high starting torque, high temperature resistant ability, low noise, ease of maintenance and lower operating costs.

>> RELIABILITY

The specifically designed beam axle, main frame, dump body and other structures integrated with industry leading hydraulic and electrical components make the NTE200 running reliable and durable. The double cooling motor design makes the system operating highly efficient, safe and reliable. Pre-Lube system and low temperature starting protection could prevent engine from unexpected failure, which increase engine reliability and durability.

>> SUPER STRUCTURE

Rugged one-piece "工" beam construction with closed bottom protects critical components from road and mud damage. Deck components are located to optimize driver visibility and access to the top of the engine, piping and electrical wiring allows for ease of maintenance.

>> FRONT AXLE

The axle is pin connected to the main frame with four longitudinal rods, two suspensions and a lateral stabilizer rod which reduces the stress acting on the main frame. The tyres maintain alignment regardless of suspension stroke and extends tyre life.



>> TYRES

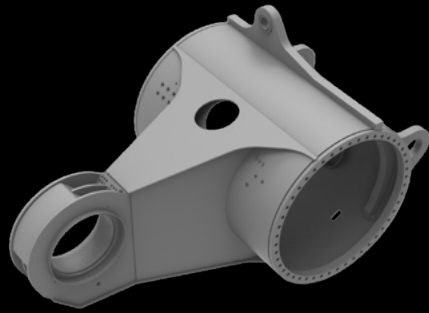
Rock deep tread type tubeless

Standard: 37.00R57** Radial Rim Size: 27.00×57

Options: 40.00R57** Radial Rim Size: 29.00×57

>> AXLE BOX

The optimal designed axle box reduces structure weight without compromising strength. Nose-cone attachment features a patented, large two-piece bearing, which reduces contact pressure to less than 9653 kPa and extends bearing life.



>> SUSPENSION

Four nitrogen-over-oil cylindrical suspension struts provide maximum driver comfort and minimize the impact on the frame during loading and running on the uneven surfaces and maximises truck performance.

Stroke: Front: 355 mm (14 inch)

Rear: 275 mm (10.75 inch)

Rear Axle Oscillation: $\pm 10^\circ$



>> HOIST SYSTEM

The electric control hoist system operates two, two-way, two-level hoist cylinders to realize the lifting, dropping, holding and floating functions of the body. The system is powered by a dual hydraulic pump that provides sufficient power to the system.

Power up Loaded: 20s

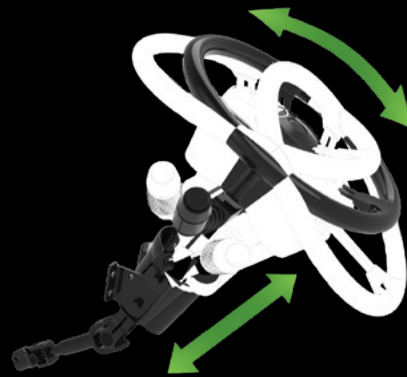
Power down: 13s

Filtration: High-pressure units with 6 micron (nominal) filtration assure the hydraulic system is reliable and safe. Hydraulic tank inlet contains a strainer with 100 mesh screening.

>> STEERING SYSTEM

Full-time, medium - closed, load-sensing system operating two double-acting cylinders, supplied by accumulators that are replenished by a pressure-compensated piston pump. Auxiliary steering supplied by accumulator and meets ISO 5010.

Minimum turning radius. (SAE) : 13.6 m



>> DUMP BODY

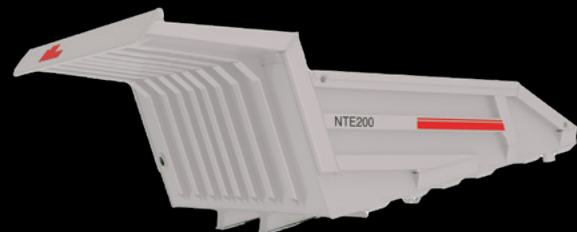
A horizontal bolster deep-V floor design lowers the center of gravity of the truck and improves maneuverability. Compared with horizontal floor body, deep-V floor design delivers stability and strength. Standard rock body incorporates 19 mm (3/4") bottom plate with 10 mm (3/8") side plate and 13 mm (1/2") front plate.

Struck (SAE): 92 m³

Heaped (SAE 2:1): 123 m³

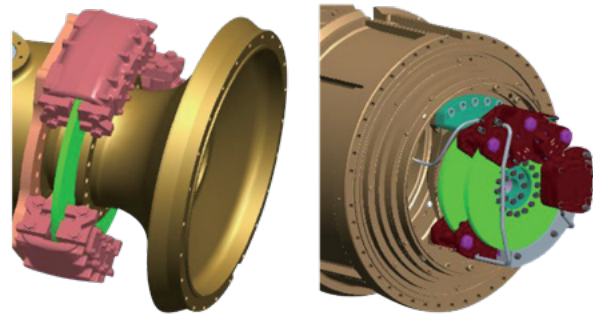
Working (2: 1): 106 m³

Optional body available based on material density and payload rating.



>> BRAKE SYSTEM

Hydraulic brake actuation system features: service brakes (foot or hand operated), secondary brake (foot or hand operated), loading brake and spring apply, hydraulically released parking brake. Brake accumulators (3 unit) provide effective brake force under emergency situation. The system would alarm when system pressure drops below 2100 PSI.



Front Brakes — 3 calipers per wheel on 1168 mm (39") wheel speed discs.

Rear Brakes — 2 calipers per wheel on two 511 mm (20.125") armature speed discs.

Park Brakes — spring apply, hydraulic release.

Braking system meets the requirements of ISO 3450.

>> 24V ELECTRICAL SYSTEM

24 Volt system powered by six (6) twelve (12) volt batteries (3 series pairs in parallel). Battery isolation switch standard. Equipped with manual reset circuit breaker.

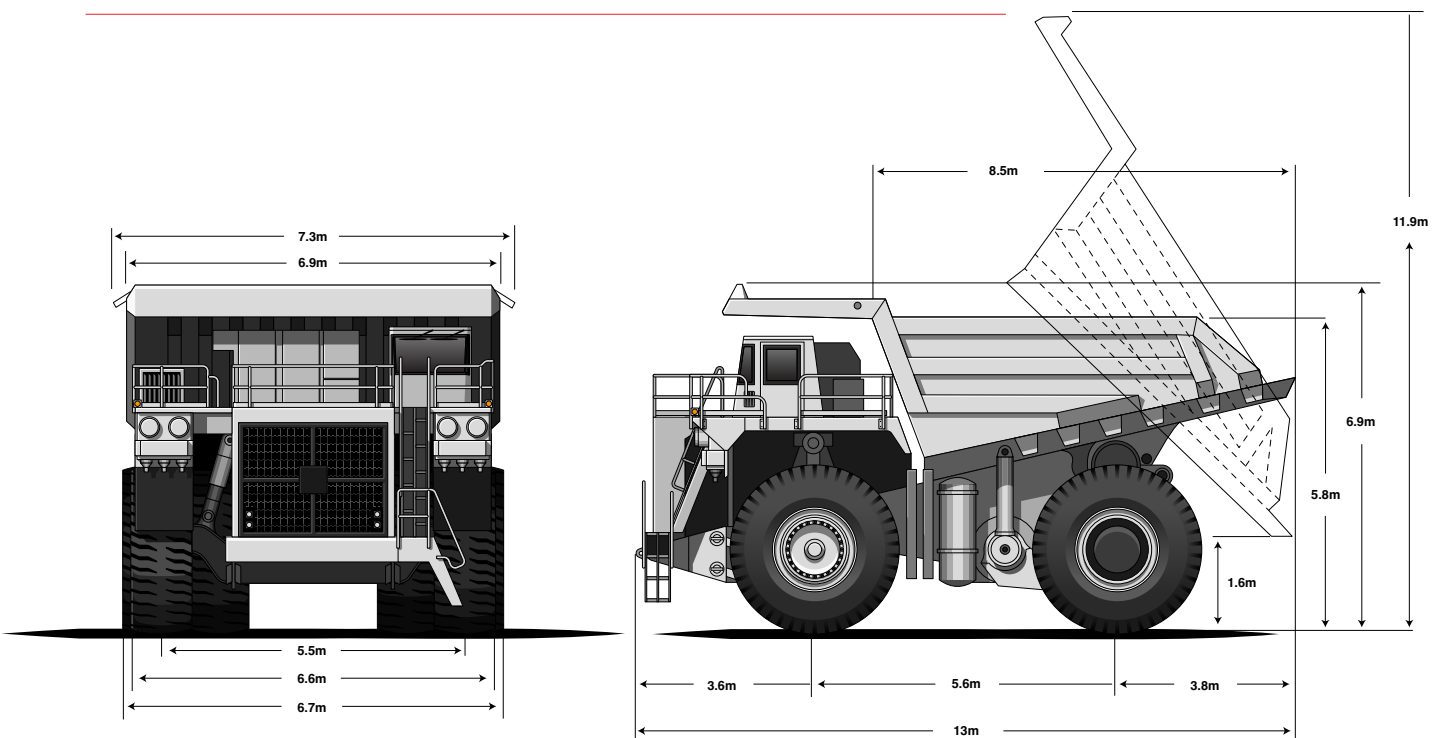
Lighting 24VDC

Starting 24VDC

Alternator 260Amp with voltage regulator

Provided a unique diagnostic software which can quickly and accurately find the 24V system fault.

>> OVERALL DIMENSIONS IN METRES



>> STANDARD EQUIPMENT

CAB

Acoustic lining

Door locks

Floor mat

ROPS/FOPS protection

Electric window

A/C /heater/Defroster

Interior light

Illuminative panel

Air Suspension seat

Passenger seat

Seat belts

Steering column, adjustable

Sun visor

Tinted glass

Wipers/washers

Compartment

Radio and MP3 player

CONTROLS

Block switch

Selector

Headlight/taillight switch

Key switch, power

Wiper switch

Loading brake switch

Parking brake switch

Stairway light switch

Engine check switch

Engine start/stop switch

Hand braking switch

DID

INSTRUMENTATION GROUP

Engine tachometer

Fuel gauge

Hour meter

Engine oil pressure gauge

Speedometer

Voltmeter

Engine coolant temperature

Flashing indicator

Air Cleaner Restriction

Warning indicator light/buzzer

Check engine

Engine stop

Cooling duct pressure

Low fuel level

High Hydraulic temperature

Low brake pressure

Low hydraulic nil level

Low steering pressure

Electric system fault

Low coolant level

Parking brake

Body hoist

Headlight beam

24V Alternator not charging

Turn indicator light

High/Low speed indicator

GENERAL

Steering/braking accumulators

Two-stage air cleaner

Hoist control

Hand Brake Control

Retardation Control

Hydraulic control casing

Hydraulic tank

Fuel level

Coolant sight glass nut

Fuel sight gauge nut

Engine pre-lube

Low-temp start- protection

Dry disc brake/Wet brake

Exhaust muffler

HID Lamp

Reversing light/buzzer

Steer/Retard/Running brake

Hoist/Reverse interlocking

Hoist/High speed interlocking

Parking brake

Two-circuit brake

Rear View Mirrors

Rock Ejectors

Body safety chains

Engine maintenance ladders

Radiator, changeable core

Hydraulic filter, High pressure

Fuel Quick Fill

Deck safety guards

Extinguisher

Central lubrication

Auxiliary Dumping Connector

Hydraulic Cooler

Temp-sensing Fuel cooler

>> **OPTIONAL EQUIPMENT**

Body Liners	Auto weigh system	Maintenance illuminator
Brake auto apply	Fuel heater	Body, enlarged capacity
Body heating	Engine cold start system	HMI system
Rear backing-up monitor	Central Fill System	
Central fire suppression	Superpower back light	

>> **WEIGHTS**

	Kg	
EMPTY VEHICLE WEIGHT (EVW)		
Front Axle	65000 kg	47%
Rear Axle	73300 kg	53%
Total	138300 kg	
GROSS VEHICLE WEIGHT (GVW)		
Front Axle	107020 kg	33%
Rear Axle	217280 kg	67%
Total	324300kg	

>> **SERVICE DATA**

SERVICE CAPACITIES	LITRES
Engine Oil	204 L
Coolant	492 L
Fuel tank	2877 L
Wheel Motor	38 L
Front Suspension	33 L
Rear Suspension	42 L
Hydraulic System	890 L
Hydraulic Tank	662 L



NTE 200

Mining Truck



Aury NHL Mining Pty Ltd

HEAD OFFICE
108 Mustang Drive
Rutherford NSW 2320
Phone: +61 2 4931 9348

MACKAY
6 Progress Drive
Paget Mackay QLD 4740

PERTH
27 Purser Loop
Bassendean WA 6054

MOÇAMBIQUE
Stand 81, EN7, Chithatha,
Moatize, Tete

www.aurynhl.com.au

 **AURY** **NHL**