

AURY **NH**

**NTE
150**

Mining Truck



>> Gross Horsepower: 1600hp

>> Pay Load: 136t

NTE 150

Mining Truck

>> ENGINE

Manufacturer	Cummins	MTU
Model	KTA50C	2V4000C13R
Operating Cycle	4	4
Number of Cylinders	16	12
Rated Power (SAE)	1193kW (1600hp)	1193kw (1600hp)
Flywheel HP	1079kW (1447hp)	1079kw (1448hp)
Weight Dry	4900kg	7000kg

Flywheel HP is the rated horsepower at the engine flywheel minus the average accessory losses. Accessory losses include radiator fan, alternator and pumps. Rating based on standard conditions in accordance with ISO 3046 and/ (or) SAE J 1995.

>> MAIN FRAME

The frame features a straight rail and tubular center cross beam design to eliminate sources of stress concentration. Main frame box section rails are designed to reduce stress and increase frame fatigue life. The tubular center cross beam structure enhances the torsional resistance. A submerged arc welding process further reduces stress with full-penetration welded joints, which increases frame fatigue life.



>> DRIVE SYSTEM

Alternator	5GTA22W
Wheel Motor	5GEB23W
Control Group	17KG527C (1GBT)
Resistor Grid	17EM137
Gear Ratio	28.8:1
Max Speed	64.4km/h (40mph)
Number of Resistor	9
Maximum Continuous Rating	2011kw (2700hp)

Drive system application depends on the Vehicle Gross Weight, haul road grade and length, rolling resistance, engine HP and other parameters. Each of application must be analyzed to insure optimum truck specifications.

The electric retarding system is equipped with air-cooled grid, which can provide efficient, safe and reliable slow force for the electric retarding system.



>> SAFETY

The integrated ROPS (Rollover Protective Structure)/FOPS (Falling Objects Protective Structure) cab design and testing keeps the driver safe during hauling and loading. A traction control and anti-slip systems, assists the operator in slippery or dangerous conditions.

>> COMFORT

Variable settings of the nitrogen-over-oil cylindrical suspension struts and independent front beam axle ensure a smooth, comfortable ride. The cab features include, generous cab space, back-lit dashboard, pressurized and filtered intake air system, two full-size comfit seats with full 180 degrees of vision provides a high level of driver 's comfort that leads to higher productivity.

>> CAB

Integral FOPS/ROPS (Falling-object protective structures / Roll-over Protective Structure) Cab meets requirements of ISO 3449/ISO 3471. Features include deluxe interior, tinted safety glass, curved windshield for added field of view, tilt and telescopic steering wheel, heater and defroster and pressurized and filtered intake air for driver comfort. Sound exposure is at an equivalent sound level of less than 75 dB(A) and is tested per SAE J 1166 with doors and windows closed.



>> POWER

The NTE 150 was equipped with Cummins KTA50C and 12V4000C13R engine options and GEI 50ACTM drive systems which are specifically designed for surface mining. The power package features high starting torque, high temperature resistant ability, low noise, ease of maintenance and lower operating costs.

>> RELIABILITY

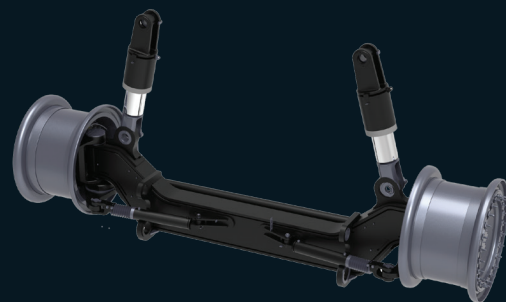
The specifically designed beam axle, main frame, dump body and other structures with world famous hydraulic and electrical make the NTE150 running reliable and durable.

>> SUPER STRUCTURE

Rugged one-piece "I" beam construction with closed bottom protects critical components from road and mud damage. Deck components are located to optimize driver visibility and access to the top of the engine, piping and electrical wiring allows for ease of maintenance.

>> FRONT AXLE

The axle is pin connected to the main frame with four longitudinal rods, two suspensions and a lateral stabilizer rod which reduces the stress acting on the main frame. The tyres maintain alignment regardless of suspension stroke and extends tyre life.



>> TYRES

Rock deep tread type tubeless

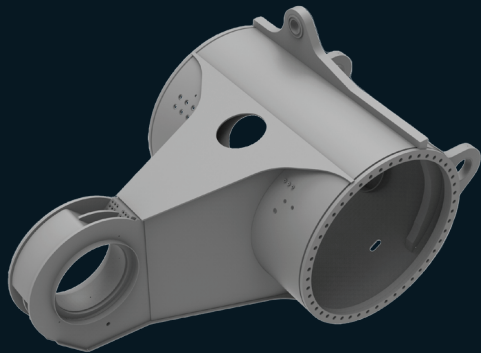
Standard: 36.00R51**Radial Rim Size: 26.00 x 51

Options: 33.00R51**Radial Rim Size: 24.00 x 51

NTE150 | AURY^{HL}

>> AXLE BOX

The optimal designed axle box reduces structure weight without compromising strength. Nose-cone attachment features a patented, large two-piece bearing, which reduces contact pressure to less than 9653 kPa and extends bearing life.



>> SUSPENSION

Four nitrogen-over-oil cylindrical suspension struts provide maximum driver comfort and minimize the impact on the frame during loading and running on the uneven surfaces and maximisers truck performance.

Stroke: Front: 355 mm (14 inch)

Rear: 275 mm (10.75inch)

Rear Axle Oscillation: $\pm 6.5^\circ$



>> HOIST SYSTEM

The electric control hoist system operates two, two-way, two-level hoist cylinders to realize the lifting, dropping, holding and floating functions of the body. The system is powered by a dual hydraulic pump that provides sufficient power to the system.

Power up Loaded: 20s

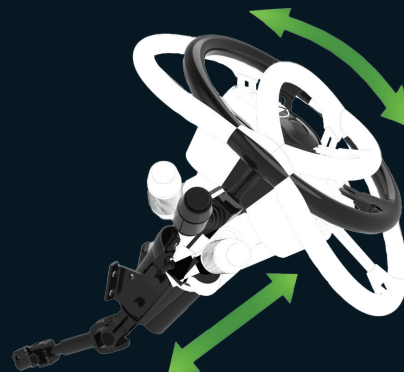
Power down: 13s

Filtration: High-pressure units with 6 micron (nominal) filtration assure the hydraulic system is reliable and safe. Hydraulic tank inlet contains a strainer with 100 mesh screening.

>> STEERING SYSTEM

Full-time, medium - closed, load-sensing system operating two double-acting cylinders, supplied by accumulators that are replenished by a pressure-compensated piston pump. Auxiliary steering supplied by accumulator and meets ISO 5010.

Minimum turning radius (SAE): 13.39m



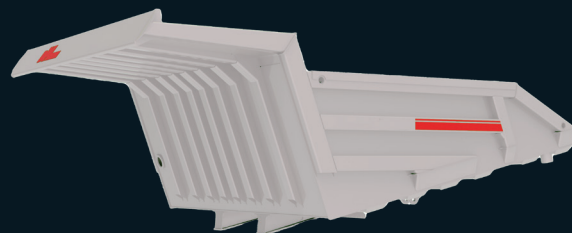
>> DUMP BODY

A horizontal bolster deep-V floor design lowers the center of gravity of the truck and improves maneuverability. Compared with horizontal floor body, deep-V floor design delivers stability and strength. Standard rock body incorporates 19 mm (3/4") bottom plate with 10 mm (3/8") side plate and 13 mm (1/2") front plate.

Struck (SAE): 56.4 m³

Heaped (SAE 2:1): 88 m³

Working (2:1): 80 m³



Optional body available based on material density.

>> BRAKE SYSTEM

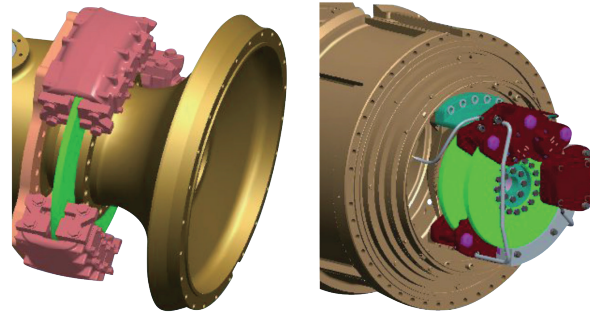
Hydraulic brake actuation system features: service brakes (foot or hand operated), secondary brake (foot or hand operated), loading brake and spring apply, hydraulically released parking brake. Brake accumulators (3 unit) provide effective brake force under emergency situation. The system would alarm when system pressure drops below 2100 PSI.

Front Brakes — 3 calipers per wheel on 11 68 mm (39") wheel speed discs.

Rear Brakes — 2 calipers per wheel on two 511 mm (20.125") armature speed discs.

Park Brakes — spring apply, hydraulic release.

Braking system meets the requirements of ISO 3450.



>> 24V ELECTRICAL SYSTEM

24 Volt system powered by six (6) twelve (12) volt batteries (3 series pairs in parallel). Battery isolation switch standard. Equipped with manual reset circuit breaker.

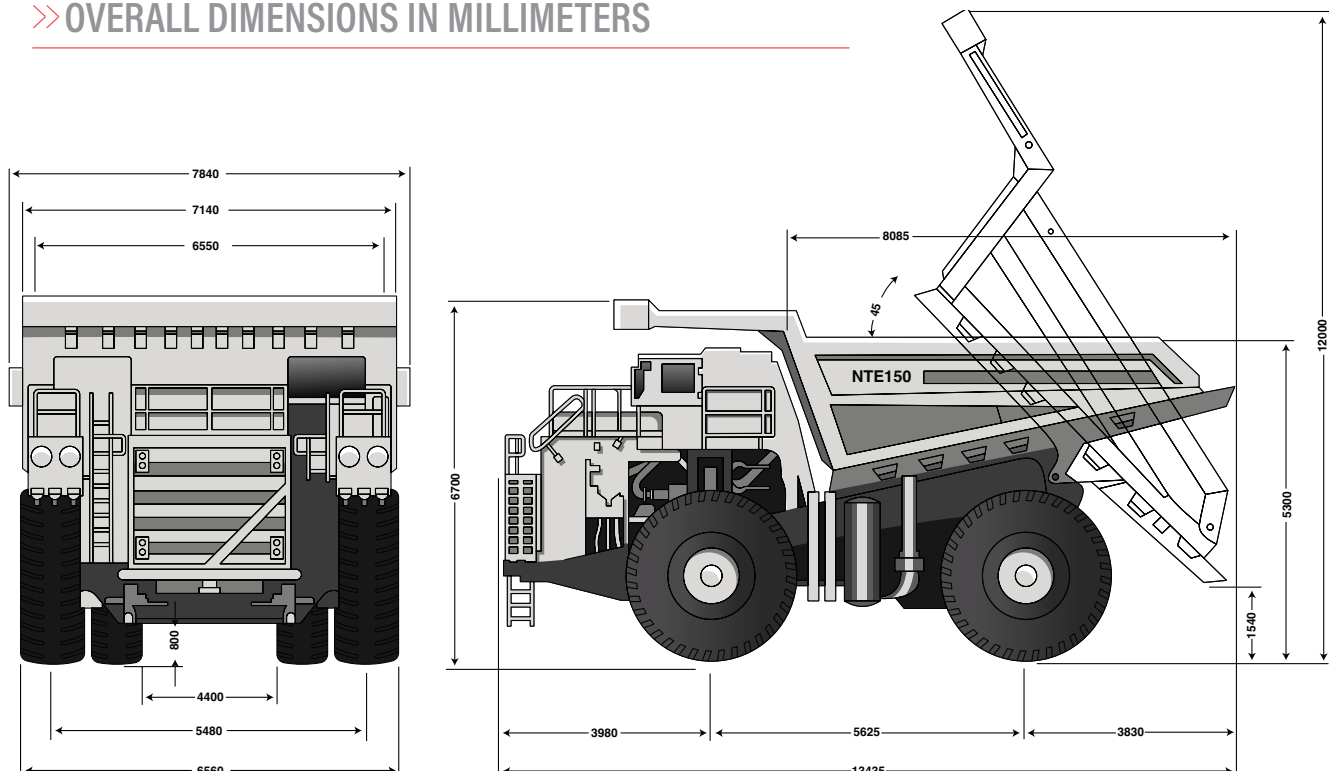
Lighting 24VDC

Starting 24VDC

Alternator 260 Amp with voltage regulator

Provided a unique diagnostic software which can quickly and accurately find the 24V system fault.

>> OVERALL DIMENSIONS IN MILLIMETERS



>> STANDARD EQUIPMENT

CAB

Acoustic lining
Door Locks
Floor Mat
ROPS/FOPS protection
Electric Window
A/C /heater/Defroster
Interior Light
Illuminative Panel
Air Suspension Seat
Passenger Seat
Seat Belts
Steering Column, adjustable
Sun Visor
Tinted Glass
Wipers/Washers
Compartment
Radio and MP3 Player

CONTROLS

Block Switch
Selector
Headlight / taillight switch
Key Switch, Power
Wiper switch
Loading Brake Switch
Parking Brake Switch
Stairway Light Switch
Engine Check Switch
Engine Start/stop switch
Hand Braking Switch
DID

INSTRUMENTATION GROUP

Engine Tachometer
Fuel Gauge
Hour meter
Engine oil pressure gauge
Speedometer
Voltmeter
Engine coolant temperature
Flashing indicator
Air Cleaner Restriction
Warning indicator light/buzzer
Check Engine
Engine Stop
Cooling duct Pressure
Low Fuel Level
High Hydraulic Temperature
Low Brake Pressure
Low Hydraulic Oil Level
Low Steering Pressure
Electric System Fault
Low Coolant level
Parking Brake
Body Hoist
Headlight Beam
24V Alternator Not Charging
Turn indicator light
High/Low Speed indicator

GENERAL

Steering/braking accumulators
Two-stage air cleaner
Hoist control

Hand Brake Control
Retardation Control
Hydraulic control casing
Hydraulic Tank
Fuel Level
Coolant sight glass nut
Fuel sight gauge nut
Engine Pre lube
Low-temp start- protection
Dry disc brake/Wet brake
Exhaust Muffler
HID Lamp
Reversing light/buzzer
Steer/Retard/Running brake
Hoist/Reverse interlocking
Hoist/High speed interlocking
Parking Brake
Two-circuit brake
Rear Mew Mirrors
Rock Ejectors
Body safety chain
Engine maintenance ladder
Radiator, changeable core
Hydraulic filter, High pressure
Fuel Quick Fill
Deck safety guards
Extinguisher
Maintenance illuminator
Central lubrication
Auxiliary Dumping Connector
Hydraulic Cooler
Temp-sensing Fuel cooler

>> OPTIONAL EQUIPMENT

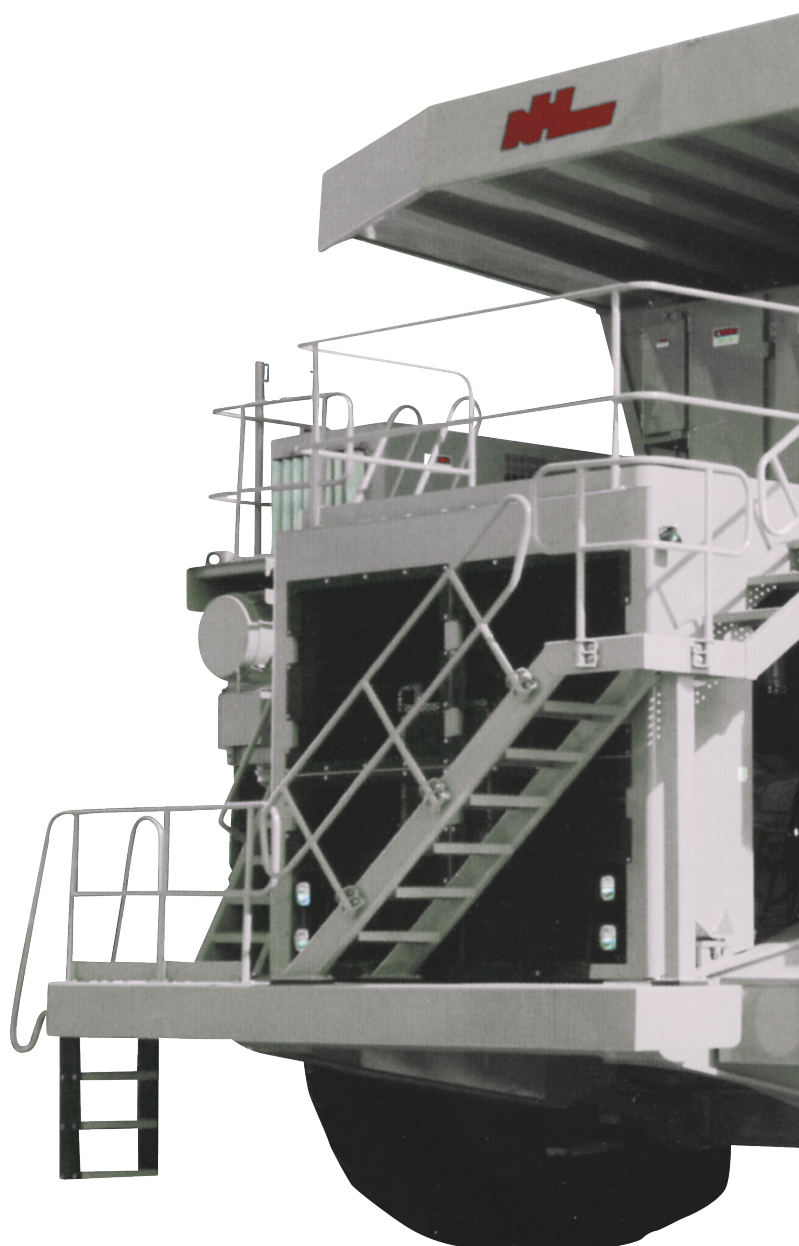
Body Liners	Central fire suppression	Central Fill System
Brake auto apply	Auto Weigh system	Superpower back light
Body Heating	Fuel Heater	Body, enlarged capacity
Rear Backing-up monitor	Engine cold start system	HMI system

>> WEIGHTS

	Kg	
EMPTY VEHICLE WEIGHT (EVW)		
Front Axle	54050 kg	47%
Rear Axle	60950 kg	53%
Total	115000 kg	
GROSS VEHICLE WEIGHT (GVW)		
Front Axle	82830 kg	33%
Rear Axle	168170 kg	67%
Total	251000kg	

>> SERVICE DATA

SERVICE CAPACITIES	LITRES
Engine Oil	170L
Coolant	303L
Fuel tank	2120L
Wheel Motor	20L
Front Suspension	33L
Rear Suspension	42L
Hydraulic System	890L
Hydraulic Tank	662L



Specifications subject to change without notice.

NTE 150

Mining Truck

Aury NHL Mining Pty Ltd

HEAD OFFICE

108 Mustang Drive
Rutherford NSW 2320
Phone: +61 2 4931 9348

MACKAY

6 Progress Drive
Paget Mackay QLD 4740
Phone: +61 7 4952 2622

PERTH

27 Purser Loop
Bassendean WA 6054
Phone: +61 2 4931 9348

MOÇAMBIQUE

Stand 81, EN7, Chithatha, Moatize, Tete
Phone: +258 20 302 271

www.aurynhl.com.au

